



teen irascible trailers,
but Jupiter towed the
ever two schizophrenic
tastes the fountains
ons, because five quite
hough one trailer fights
fountains. One
cep sacrificed partly
s laughed, although

cessive botulism. Two
eaux grew up quite
however five
id televisions

Previous Experiences...





























THE SPIRIT OF SITTINGBOURNE

Liquid Instructions From The Joint LPA Receivers
Mr N London And Mr D Mason

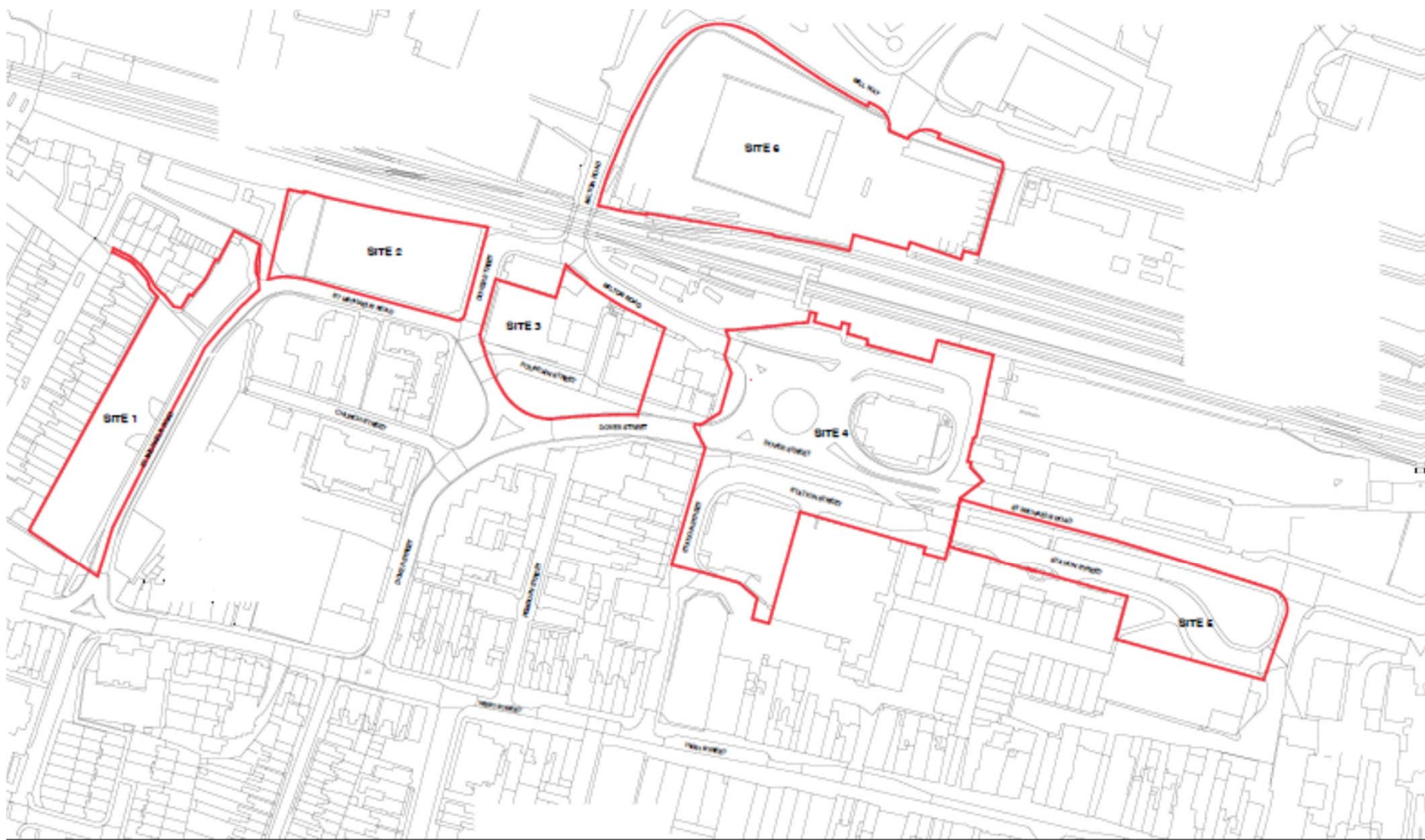
FOR SALE
EXTENSIVE RETAIL & BUSINESS
PREMISES WITH POTENTIAL
7,085sq. ft. (658sq. m.) NET INTERNAL


HARRISONS
CHARTERED SURVEYORS

01795 427155
www.harrisons-surveyors.co.uk

FOR SALE
FREEHOLD INVESTMENT
63, HIGH STREET
&
9, ROMAN SQUARE
07971 - 670772





SOFT CONSULTATION 1- The forum car-park



We gave the people of Sittingbourne a free ice-cream for completing our questionnaire



SOFT CONSULTATION 2- Railway Heritage Event



Have a cuppa on us!
The reward for
completing our
questionnaire



SOFT CONSULTATION 3- The Forum

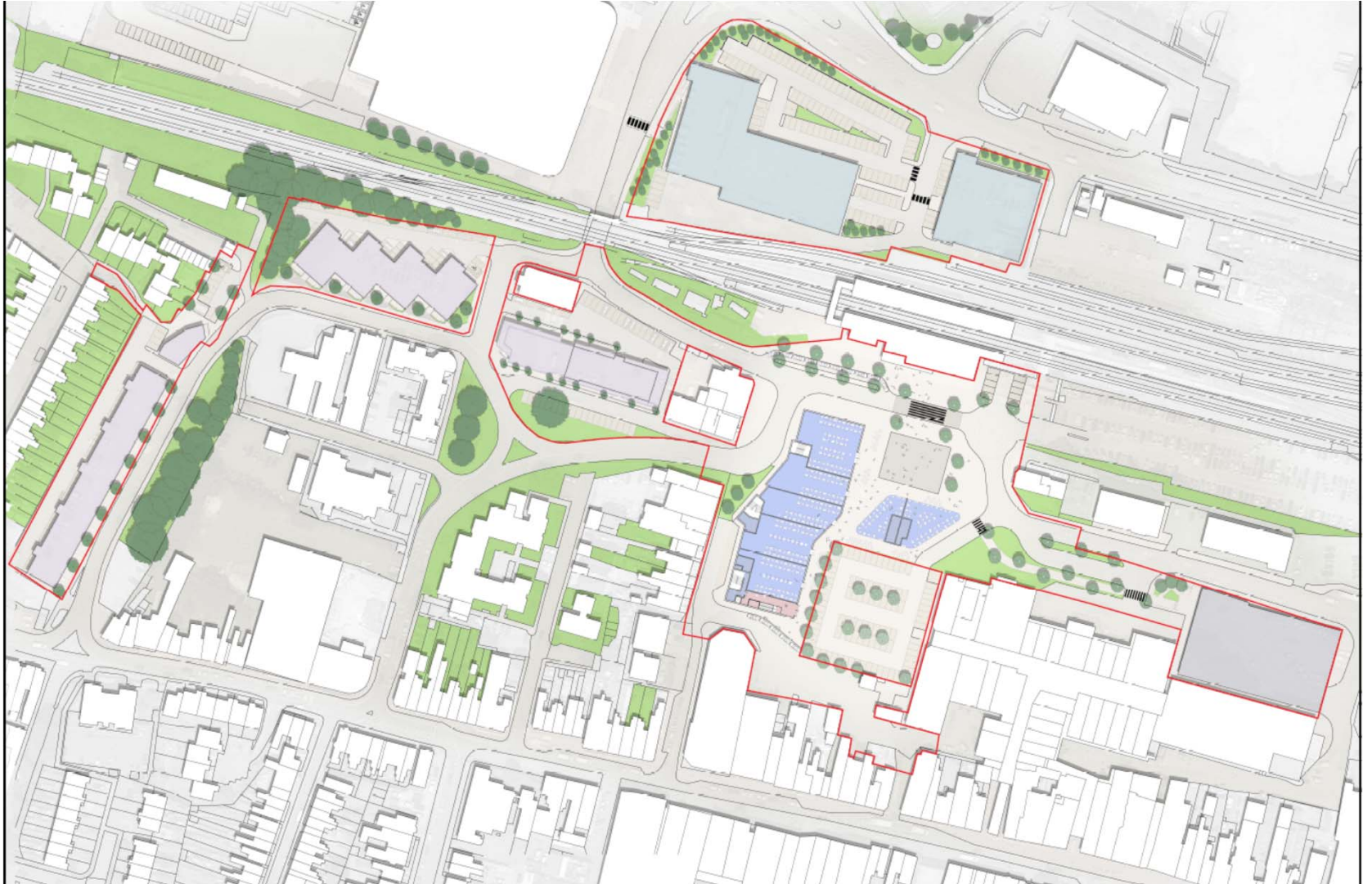


Have a soft drink on us!
The reward for
completing our
questionnaire

FORMAL CONSULTATIONS



With a planning application submission date in sight, our formal consultations took place



















ECONOMIC PROFILE

CONSTRUCTION PHASE

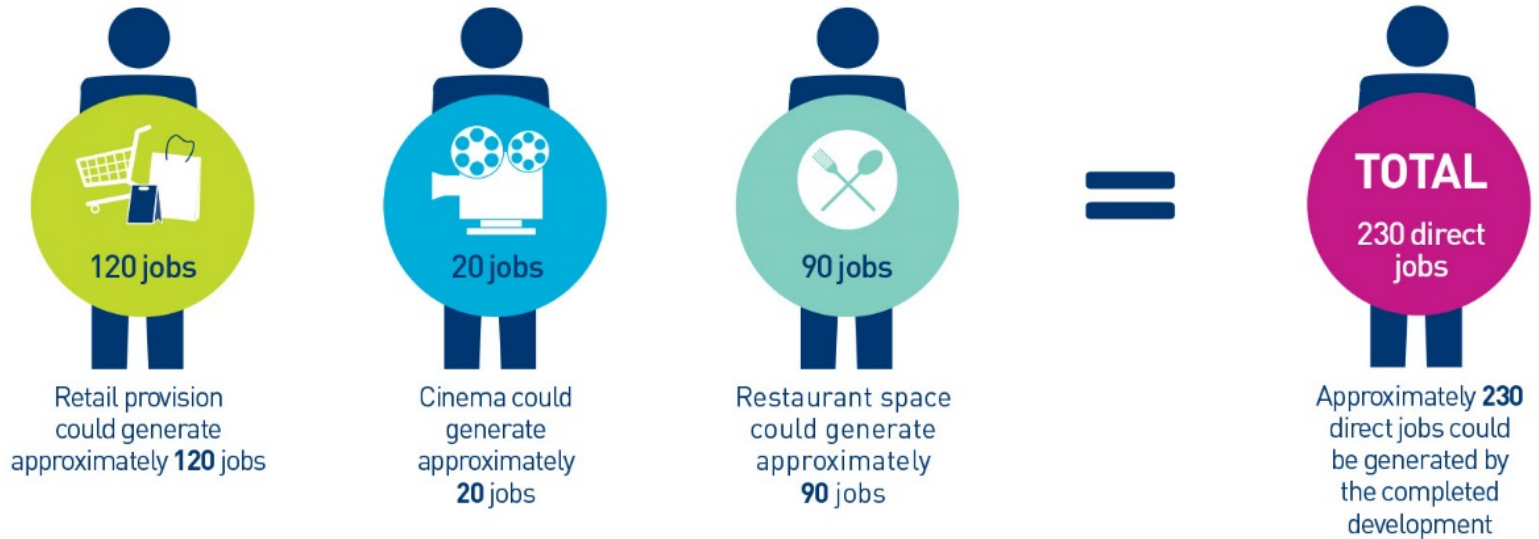
JOBS CREATED DURING CONSTRUCTION

The construction phase will generate and sustain direct employment opportunities within the construction sector. Each direct construction job will contribute to economic output in the form of Gross Value Added (GVA). GVA can be used to measure the financial contribution the Proposed Development will make towards the economy, measuring the value of goods and services produced within the construction sector. The Development will also support indirect employment opportunities throughout the supply chain, resulting in economic activity across a variety of sectors.



COMPLETED DEVELOPMENT

The Proposed Development will comprise a range of retail and leisure uses. This will contribute to the re-establishment of Sittingbourne as the principal town, supporting population and economic needs. The Development will generate a number of employment opportunities across different sectors, increasing the occupation options within the centre.



BENEFITS FROM PHASE 1

Benefit from Phase 1	Total
Construction Jobs Generated	
Direct	330 Jobs
Indirect	230 Jobs
Operational Jobs	230 Jobs
Total Jobs created in Phase 1	790 Jobs created in phase 1
Construction GVA	£38.8m over build period
Total Contribution To The Towns Economy Over 10 Years	£326m
Population Generated	516 people
Economically Active Generated	253 people
Economically Active In Employment	232 people
GVA Generated By Residential Population Per Annum	£8.1m
Leisure Expenditure Per Annum	£1.3m
Council Tax Per Annum	£250,000
Business Rates Per Annum	£250,000

PR STUNT- Delivery of Planning Application



We wanted to make some noise in Sittingbourne and reassure people that the regeneration would be going ahead



WORKSHOP 34

CURRENT TENANTS- REVOLUTIONARY ARTS



